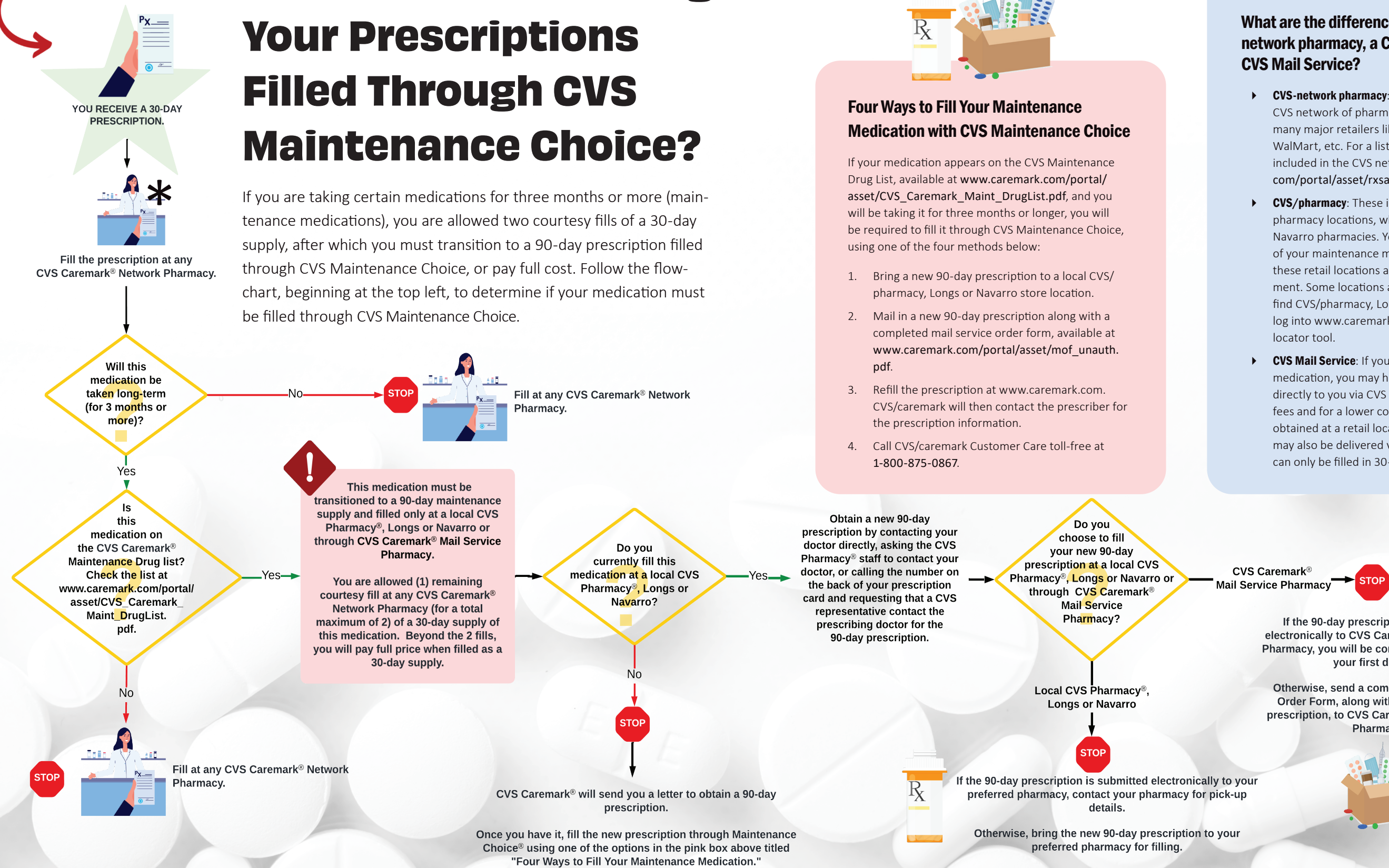


**START  
HERE**

# Should You Be Getting Your Prescriptions Filled Through CVS Maintenance Choice?

If you are taking certain medications for three months or more (maintenance medications), you are allowed two courtesy fills of a 30-day supply, after which you must transition to a 90-day prescription filled through CVS Maintenance Choice, or pay full cost. Follow the flow-chart, beginning at the top left, to determine if your medication must be filled through CVS Maintenance Choice.



## Four Ways to Fill Your Maintenance Medication with CVS Maintenance Choice

If your medication appears on the CVS Maintenance Drug List, available at [www.caremark.com/portal/asset/CVS\\_Caremark\\_Maint\\_DrugList.pdf](http://www.caremark.com/portal/asset/CVS_Caremark_Maint_DrugList.pdf), and you will be taking it for three months or longer, you will be required to fill it through CVS Maintenance Choice, using one of the four methods below:

1. Bring a new 90-day prescription to a local CVS/pharmacy, Longs or Navarro store location.
2. Mail in a new 90-day prescription along with a completed mail service order form, available at [www.caremark.com/portal/asset/mof\\_unauth.pdf](http://www.caremark.com/portal/asset/mof_unauth.pdf).
3. Refill the prescription at [www.caremark.com](http://www.caremark.com). CVS/caremark will then contact the prescriber for the prescription information.
4. Call CVS/caremark Customer Care toll-free at 1-800-875-0867.

## What are the differences between a CVS-network pharmacy, a CVS/pharmacy, and CVS Mail Service?

- ▶ **CVS-network pharmacy:** Any pharmacy within the CVS network of pharmacy locations, including many major retailers like Walgreens, Rite Aid, WalMart, etc. For a list of national pharmacies included in the CVS network go to [www.caremark.com/portal/asset/rxsavings\\_pharm.pdf](http://www.caremark.com/portal/asset/rxsavings_pharm.pdf).
- ▶ **CVS/pharmacy:** These include ONLY CVS-owned pharmacy locations, which include Longs and Navarro pharmacies. You may pick up 90-day refills of your maintenance medications in person at these retail locations and pay the mail order copayment. Some locations also offer local delivery. To find CVS/pharmacy, Longs and Navarro locations, log into [www.caremark.com](http://www.caremark.com) and use the pharmacy locator tool.
- ▶ **CVS Mail Service:** If you take a maintenance medication, you may have 90-day refills delivered directly to you via CVS Mail Service with no delivery fees and for a lower copayment than 30-day refills obtained at a retail location. Specialty medications may also be delivered via this option, though they can only be filled in 30-day increments.

**NOTE:** Medications on the CVS Maintenance Drug List may not be covered under the Health Plan and/or may require additional authorization. For a list of current medications covered under the Health Plan, refer to the complete formulary at [www.dgaplans.org/formulary](http://www.dgaplans.org/formulary). PH